

Comparator 2000+

Highlights

- More than 400 different test discs are available
- Compensation for coloured and turbid samples
- Guaranteed constancy of the coloured glass standards
- Integrated prism



The system for
colorimetric water analysis

With its accessories, the Lovibond® Comparator system 2000 is an extremely versatile, modular system for testing water. It is simple to use yet is uncompromising in terms of precision and reproducibility of results. It is compact and portable. The integrated prism brings the glass standards of the test discs and the coloured sample into the same field of view.

Test discs

The required accuracy of results is only ensured if stable, fade-free colour standards are used.

Glass colour standards are fade-free, resistant to chemicals and scratchproof. Lovibond® standards are made from coloured glass filters. They comply with international standards, e.g. ISO 7393/2.

Please see the table on page 26 for information on the various test discs or refer to our **L 213 test disc catalogue**.

Lighting unit

We recommend the use of the battery-operated Lovibond® lighting unit in variable lighting conditions. This guarantees uniform lighting conditions, and ensures greater test accuracy.

Cells

We manufacture precision plastic and optical glass cells in line with the highest quality standards. The cells ensure high precision and reproducibility of results.



Comparator 2000+



Test disc with colour-stable glass standards



Lighting unit TK 102



Nessleriser 2150 with lighting unit

➔ Order codes see page 27

Applications

- Water Treatment
(e.g. Drinking Water)
- Universities
- Pool-Water
- Special Applications
- Research Centres
- Laboratory and
Field Testing

Comparator 2000+

Testpak – Ideal add-on for the Comparator 2000+

For the most popular tests, discs are available in a Lovibond® TESTPAK. The TESTPAK is a simple and cost-effective means of extending the use of an existing Comparator instrument to a new test parameter.

Each TESTPAK contains the required test disc, tablet reagents (normally for 100 tests), cells and accessories as well as detailed instructions for the desired method.

Please contact our sales departments for further information: sales@tintometer.de



TESTPAK with test disc, tablet reagents, cells, accessories and instructions

Test	Disc	Range*	Code
Aluminium	3/127 A	0 – 0.5 mg/l	73 02 05
Ammonia	3/112	0 – 0.4 mg/l NH ₄	73 00 60
	3/113	0 – 1.0 mg/l N	73 00 70
	3/125	0 – 10.0 mg/l N	73 01 80
Bromine	3/53 A	0.2 – 2.0 mg/l	73 53 10
	3/53 B	1.0 – 10.0 mg/l	73 53 20
	3/53 C	0.5 – 6.0 mg/l	73 53 30
Chlorine (free, combined, total)	3/40 A	0.1 – 1.0 mg/l	73 40 10
	3/40 B	0.2 – 4.0 mg/l	73 40 20
	3/40 HN	2.0 – 10.0 mg/l	73 40 80
	3/40 J	0.1 – 2.0 mg/l	73 41 40
	3/40 K	0.5 – 6.0 mg/l	73 39 30
	3/40 P	2.0 – 5.0 mg/l	73 39 20
3/40 S	1.0 – 4.0 mg/l	73 40 90	
Chlorine Dioxide	3/40 ED	0.04 – 0.57 mg/l	73 40 65
	3/40 FD	0.38 – 1.52 mg/l	73 40 75
Copper	3/106	0 – 1.0 mg/l	73 00 50
	3/110	0.05 – 4.0 mg/l	73 00 40
	3/149	0.5 – 5.0 mg/l	73 04 50
Hydrogen Peroxide, DPD	3/50 E	0.01 – 0.15 mg/l	73 50 20
	DPD 3/50 A	0.05 – 0.5 mg/l	73 50 00
	DPD 3/50 B	0.1 – 3.0 mg/l	73 50 10
	Potassium iodide 3/114	2.0 – 20.0 mg/l	73 00 80
	Potassium iodide 3/115	10.0 – 100.0 mg/l	73 00 90
Iron	3/116	0.1 – 1.0 mg/l	73 01 00
	3/117	1.0 – 10.0 mg/l	73 01 10
Nitrite	3/103	0.05 – 0.5 mg/l	73 00 30
Ozone	DPD 3/67 A	0.01 – 0.1 mg/l	73 67 10
	DPD 3/67	0.1 – 1.0 mg/l	73 67 00
	Indigo 3/148	0 – 0.5 mg/l	73 04 40
pH-value	2/1 G	5.2 – 6.8	72 11 00
	2/1 J	6.8 – 8.4	72 11 30
	2/1 L	8.0 – 9.6	72 11 90
QAC (Quaternary Ammonium Compounds)	3/118	2.0 – 20.0 mg/l	73 01 20
	3/119	20.0 – 200.0 mg/l	73 01 30
Sodium Hypochlorite	3/2 Hypo	2 – 18 %	73 21 10
Zinc	3/151	0.1 – 1.0 mg/l	73 04 70

* Disc readings see following pages



Test Kits – Complete kits for water analysis

Scope of delivery for standard kits

Comparator test kits are supplied as a complete system in a sturdy plastic case. Together with the Comparator 2000+ and test discs, each kit includes all the necessary cells, accessories and Lovibond® tablet reagents (for 100 measurements) to achieve reliable results.

The table to the right shows a selection of the most popular standard test kits.

Customised equipment

In addition to supplying standard test kits, we can construct customised kits to suit individual requirements.

Based on the desired test parameters and measuring ranges we will draw up a detailed offer to suit your application.

Optional accessory

All test kit versions allow integration of the battery-operated portable lighting unit TK 102 and charger TK 102/ 1.

Operating instructions

The operating instructions provide a step-by-step explanation of how to conduct the water test, ensuring that even "non-chemists" can achieve reliable and accurate measurements in the minimum of time.



Example of a comparator test kit, together with daylight unit

Type	Designation/Combi	Test	Range*	Code			
AF 270	Mini Lab Pool Water	Aluminium	0 - 0.5 mg/l Al	41 27 00			
		Ammonia	0 - 0.4 mg/l N				
AF 357	Drinking Water	Chlorine	0.1 - 1.0 mg/l Cl ₂	41 35 70			
			1.0 - 4.0 mg/l Cl ₂				
		Chloride	5 - 5000 mg/l Cl				
		Cyanuric acid	0 - 80 mg/l				
		Iron	0.1 - 1.0 mg/l Fe				
		pH-value	5.2 - 6.8 pH				
			6.8 - 8.4 pH				
		Total Alkalinity	2.0 - 800 mg/l CaCO ₃				
		Sulphate	40 - 4000 mg/l SO ₄				
		AF 358	Sewage and Domestic Effluents		Chloride (salinity)	0 - 5000 mg/l Cl	41 35 80
Chlorine	0.02 - 0.3 mg/l Cl ₂						
	0.2 - 4 mg/l Cl ₂						
Hardness Total	0 - 500 mg/l CaCO ₃						
Fluoride	0 - 1.6 mg/l F						
AF 368	Mini Lab Heavy Metals	Hazen Colour	10 - 90 mg/l Pt	41 36 80			
		pH-value	6 - 8.4 pH				
		Ammonia	0 - 1 mg/l N				
		Chlorine	0.1 - 1 mg/l Cl ₂				
			1 - 10 mg/l Cl ₂				
AF 112A	Chlorine free, comb. tot.	Nitrite	0.05 - 0.5 mg/l N	41 11 20			
		Permanganate (BOD)	0 - 60 mg/l				
		pH-value	4 - 8 ; 8 - 9.6 pH				
		Sulphide	0 - 0.5 mg/l S				
		AF 112B	Chlorine free, comb. tot.		Chromium	10 - 100 µg Cr	41 11 30
					Copper	2.5 - 50 µg Cu	
		AF 112E	Chlorine free, comb. tot.		Cyanide	0.05 - 1 mg/l Cn	41 12 50
					Nickel	1 - 10 mg/l Ni	
		AF 112E/F	Chlorine free, comb. tot.		Zinc	0 - 50 µg Zn	41 11 26
AF 112J/J	Chlorine free, comb. tot.	Chlorine	0.1 - 2.0 mg/l Cl ₂	41 72 46			
		pH-value	6.8 - 8.4 pH				
AF 112N/T	Chlorine free, comb. tot.	Chlorine	0.1 - 1.0 mg/l Cl ₂	41 01 20			
		Chlorine	1.1 - 2.0 mg/l Cl ₂				
AF 112ED	Chlorine dioxide	Chlorine dioxide	0.04 - 0.57 mg/l ClO ₂	41 00 01			
AF 112 EF/ED	Chlorine dioxide	Chlorine dioxide	0.04 - 1.52 mg/l ClO ₂	41 00 07			
AF 116A	Chlorine, pH	Chlorine	0.1 - 1 mg/l Cl ₂	41 11 40			
AF 116B	Chlorine, pH	pH-value	6.8 - 8.4 pH	41 11 60			
AF 118S	Chlorine, pH	Chlorine	0.1 - 4 mg/l Cl ₂	41 11 81			
AF 139	Sodium hypochlorite	pH-value	5.2 - 8.4 pH	41 13 90			
AF 129	Water Balance	Sodium hypochlorite	2 - 18 % NaOCl	41 12 90			

* Disc readings see following pages

Comparator 2000+

Tests, Discs, Reagents, Cells

Test	Disc	Disc Readings	Range	Code
Aluminium	3/127 A	0; 0.05; 0.1; 0.15; 0.2; 0.25; 0.3; 0.4; 0.5 mg/l	0 - 0.5 mg/l	23 02 05
Amine	3/58	1; 2; 3; 4; 5; 6; 7; 8; 10 mg/l	1.0 - 10 mg/l	23 58 00
	3/64	0; 0.25; 0.5; 1; 2 mg/l	0 - 2 mg/l	23 64 00
Ammonia	3/112	0; 0.05; 0.1; 0.15; 0.2; 0.25; 0.3; 0.35; 0.4 mg/l	0 - 0.4 mg/l NH ₄	23 00 60
	3/113	0; 0.1; 0.2; 0.3; 0.4; 0.5; 0.6; 0.8; 1 mg/l	0 - 1.0 mg/l N	23 00 70
	3/125	0; 1; 2; 3; 4; 5; 6; 8; 10 mg/l	0 - 10 mg/l N	23 01 80
	NAA	1; 2; 3; 4; 5; 6; 8; 10 µg	1 - 10 µg NH ₃	28 31 10
	NAB	10; 12; 14; 16; 18; 20; 22; 24; 26 µg	10 - 26 µg NH ₃	28 31 20
	NAC	28; 32; 36; 40; 44; 48; 52; 56; 60 µg	28 - 60 µg NH ₃	28 31 30
	NAD	60; 65; 70; 75; 80; 85; 90; 95; 100 µg	60 - 100 µg NH ₃	28 31 40

Comparator 2000+ and Accessories

Type	Item	Code
TK 100	Lovibond® Comparator 2000+	14 20 00
TK 102	Portable lighting unit, battery operated	14 20 50
2000	Daylight Unit 2000, mains operated	17 20 00
AF 631	Water sampler with two 500 ml bottles and one lid	17 05 00
DB 426	Cell stand for 10 cells-13.5 mm, path length	17 02 60
	Glass stirring rod, 12 cm length	36 41 10
	Plastic stirring rod, 13 cm length	36 41 00
	Brush, 11 cm length	38 02 30

Glass Cells

Type	Item	Code
DB424/S	5 glass cells, 13.5 mm path length, calibrated at 2 - 12 ml, with lids	35 42 43
W680/40	Glass cell 40 mm path length, calibrated at 20 ml	60 68 90

Plastic Cells

	5 plastic cells, frosted on two sides, 13.5 mm path length, volume 10 ml, with lid	14 55 05
	10 plastic cells, as 14 55 05	14 55 00
	100 plastic cells, as 14 55 05	14 55 10



Glass cell with lid, volume 10 ml, calibrated 2 - 12 ml, path length 13,5 mm, Pack of 5, code: 35 42 43



Reagents	Quantity	Code	Accessories	Code
ALUMINIUM No.1	100	51 54 60	13.5 mm cell, 10ml	35 42 43
	250	51 54 61		
ALUMINIUM No.2	100	51 54 70		
	250	51 54 71		
Combi pack [#]	each 100	51 76 01		
ALUMINIUM No.1/No.2	each 250	51 76 02		
AMINE	100	51 10 10	Extraction tube AF260	35 26 00
	250	51 10 11		
Details on request			13.5 mm cell, 10ml	35 42 43
AMMONIA No.1	100	51 25 80	40 mm cell W680/40	60 68 90
	250	51 25 81		
AMMONIA No.2	100	51 25 90		
	250	51 25 91		
Combi pack [#]	each 100	51 76 11		
AMMONIA No.1/No.2	each 250	51 76 12		
AMMONIA No.1/2			13.5 mm cell, 10ml	35 42 43
AMMONIA No.1/2			5 mm cell W680	60 67 90
NESSLER reagent	30 ml	46 52 00	Nessler tubes 113 mm	35 30 60
	100 ml	46 52 01		
SEIGNETTE salt solution	100 ml	46 61 01		
NESSLER reagent			Nessler tubes 113 mm	35 30 60
SEIGNETTE salt solution				
NESSLER reagent			Nessler tubes 113 mm	35 30 60
SEIGNETTE salt solution				
NESSLER reagent			Nessler tubes 113 mm	35 30 60
SEIGNETTE salt solution				

Material Safety Data Sheets: www.tintometer.com, [#] no BT blister tablets, including stirring rod, 10 cm

Nessleriser System and Accessories

Type	Item	Code
2150	Nessleriser 2150 with stand, daylight unit and AF 306/P	17 20 30
2150	Nessleriser 2150 with stand	17 21 50
2150	Nessleriser 2150 upgrade kit	17 21 60
2250	Nessleriser 2250 with stand, daylight unit and DB 420	17 20 40
2250	Nessleriser 2250 with stand	17 22 50
2250	Nessleriser 2250 upgrade kit with Nessler tubes DB 420	17 21 70
2000	Daylight 2000 lighting unit	17 20 00
	Stand for Nessleriser upgrade kit	17 21 80
AF 306/S	Stand for 12 Nessler tubes	17 02 90
AF 306	Pair Nessler tubes, 113 mm	35 30 60
AF 306/P	Pair Nessler tubes, 113 mm with plungers	35 30 80
	Plunger for Nessler tube AF 306 and AF 306/P	35 30 70
DB 420	Pair Nessler tubes, 250 mm with plungers	35 42 00
	Plunger for Nessler tube DB 420	35 42 29
AF 315	Special Nessler tube (determination of oxygen with disc NOE)	35 31 50



Nessleriser 2250 with lighting unit

Comparator 2000+

Tests, Discs, Reagents, Cells

Test	Disc	Disc Readings	Range	Code
Bromine	3/53A	0.2; 0.4; 0.6; 0.8; 1; 1.2; 1.4; 1.6; 2 mg/l	0.2 - 2.0 mg/l	23 53 10
	3/53B	1; 2; 3; 4; 5; 6; 7; 8; 10 mg/l	1.0 - 10 mg/l	23 53 20
	3/53C	0.5; 1; 1.5; 2; 2.5; 3; 4; 5; 6 mg/l	0.5 - 6 mg/l	23 53 30
Chlorine free, combined, total	3/40E	0.02; 0.04; 0.06; 0.08; 0.1; 0.15; 0.2; 0.25; 0.3 mg/l	0.02 - 0.3 mg/l	23 40 60
		0.02; 0.04; 0.06; 0.08; 0.1; 0.2; 0.3; 0.4; 0.5 mg/l	0.02 - 0.5 mg/l	29 59 20
	3/40F	0.2; 0.25; 0.3; 0.35; 0.4; 0.5; 0.6; 0.7; 0.8 mg/l	0.2 - 0.8 mg/l	23 40 70
	3/40G	1.5; 1.8; 2.0; 2.3; 2.5; 2.7; 3.0; 3.2; 3.5 mg/l	1.5 - 3.5 mg/l	23 40 30
	3/40A	0.1; 0.2; 0.3; 0.4; 0.5; 0.6; 0.7; 0.8; 1 mg/l	0.1 - 1.0 mg/l	23 40 10
	3/40T	0.1; 0.2; 0.3; 0.4; 0.5; 0.6; 0.7; 0.8; 1 mg/l	0.1 - 1.0 mg/l	23 41 10
	3/40N	1.1; 1.2; 1.3; 1.4; 1.5; 1.6; 1.7; 1.8; 2 mg/l	1.1 - 2.0 mg/l	23 39 60
	3/40J	0.1; 0.2; 0.3; 0.4; 0.6; 0.8; 1; 1.5; 2 mg/l	0.1 - 2.0 mg/l	23 41 40
	3/40B	0.2; 0.4; 0.6; 1; 1.5; 2; 2.5; 3; 4 mg/l	0.2 - 4.0 mg/l	23 40 20
	3/40K	0.5; 1; 1.5; 2; 2.5; 3; 4; 5; 6 mg/l	0.5 - 6.0 mg/l	23 39 30
	3/40S	1; 1.2; 1.4; 1.6; 1.8; 2; 2.5; 3; 4 mg/l	1.0 - 4.0 mg/l	23 40 90
	3/40P	2; 2.3; 2.5; 2.7; 3; 3.2; 3.6; 4; 5 mg/l	2.0 - 5.0 mg/l	23 39 20
	3/40HN	2; 3; 4; 5; 6; 7; 8; 9; 10 mg/l	2.0 - 10 mg/l	23 40 81
	3/40CZ	0.5; 1; 1.5; 2; 4 mg/l Cl ₂ 7; 7.4; 7.6; 8 pH	0.5 - 4 mg/l Cl ₂ 7 - 8 pH	23 39 90
	3/2A	0.1; 0.2; 0.3; 0.4; 0.5; 0.6; 0.7; 0.8; 1 mg/l	0.1 - 1.0 mg/l	23 20 10
	3/2AB	0.15; 0.25; 0.5; 0.75; 1; 1.25; 1.5; 1.75; 2 mg/l	0.15 - 2.0 mg/l	23 20 20
	3/2APC	1; 1.5; 2; 2.5; 3; 3.5; 4; 4.5; 5 mg/l	1.0 - 5.0 mg/l	23 20 50



Reagents	Quantity	Code	Accessories	Code
DPD No.1	100	51 10 60 BT	13.5 mm cell, 10ml	35 42 43
	250	51 10 61 BT		
	500	51 10 62 BT		
DPD No.1			13.5 mm cell, 10ml	35 42 43
DPD No.1			13.5 mm cell, 10ml	35 42 43
DPD No.1	100	51 10 60 BT	40 mm cell W680/40	60 68 90
	250	51 10 61 BT		
	500	51 10 62 BT		
DPD No.2	100	51 15 30		
	250	51 15 31		
	500	51 15 32		
DPD No.3	100	51 10 80 BT		
	250	51 10 81 BT		
	500	51 10 82 BT		
Combi pack [#]	each 100	51 77 11		
DPD No.1 / No.3	each 250	51 77 12		
DPD No.4	100	51 12 20 BT		
	250	51 12 21 BT		
	500	51 12 22 BT		
DPD No.1/2/3/4			40 mm cell W680/40	60 68 90
DPD No.1/2/3/4			40 mm cell W680/40	60 68 90
DPD No.1/2/3/4			13.5 mm cell, 10ml	35 42 43
DPD No.1/2/3/4			13.5 mm cell, 10ml	35 42 43
DPD No.1/2/3/4			25 mm cell W680/25	60 68 60
			13.5 mm cell, 10ml	35 42 43
DPD No.1/2/3/4			25 mm cell W680/25	60 68 60
			13.5 mm cell, 10ml	35 42 43
DPD No.1/2/3/4			13.5 mm cell, 10ml	35 42 43
DPD No.1/2/3/4			13.5 mm cell, 10ml	35 42 43
DPD No.1/2/3/4			13.5 mm cell, 10ml	35 42 43
DPD No.1/2/3/4			13.5 mm cell, 10ml	35 42 43
DPD No.1/2/3/4			13.5 mm cell, 10ml	35 42 43
DPD No.1/2/3/4			13.5 mm cell, 10ml	35 42 43
DPD No.1/2/3/4			5 mm cell W680/5	60 67 90
DPD No.1/2/3/4			13.5 mm cell 10ml	35 42 43
Phenol red tablets, see pH determination			13.5 mm cell 10ml	35 42 43
Reagents at specialized chemistry dealer			13.5 mm cell 10ml	35 42 43
Reagents at specialized chemistry dealer			13.5 mm cell 10ml	35 42 43
Reagents at specialized chemistry dealer			5 mm cell W680/5	60 67 90



Tablet reagents in foil blister strip (BT)

Material Safety Data Sheets: www.tintometer.com, [#] no BT blister tablets, including stirring rod, 10 cm

Comparator 2000+

Tests, Discs, Reagents, Cells

Test	Disc	Disc Readings	Range	Code
Chlorine HR total chlorine only	3/2APH	2; 3; 4; 5; 6; 7; 8; 9; 10 mg/l total Cl ₂	2 - 10 mg/l	23 20 60
	3/2ARP	5; 10; 15; 20; 25; 30; 35; 40; 50 mg/l total Cl ₂	5.0 - 50 mg/l	23 20 70
	3/2IOD	5; 10; 25; 50; 75; 100; 150; 200; 250 mg/l total Cl ₂	5.0 - 250 mg/l	23 20 90
Chlorine free, combined, total	NDPB	0.01; 0.02; 0.03; 0.04; 0.05; 0.06; 0.07; 0.08; 0.1 mg/l	0.01 - 0.1 mg/l	28 34 50
	NDPC	0.02; 0.04; 0.06; 0.08; 0.1; 0.12; 0.14; 0.16; 0.2 mg/l	0.02 - 0.2 mg/l	28 34 60
	NDP	0.05; 0.1; 0.15; 0.2; 0.25; 0.3; 0.35; 0.4; 0.5 mg/l	0.05 - 0.5 mg/l	28 34 40
	NDPD	0.1; 0.2; 0.3; 0.4; 0.5; 0.6; 0.7; 0.8; 1 mg/l	0.1 - 1.0 mg/l	28 34 70
Chlorine dioxide	3/40AD	0.19; 0.38; 0.57; 0.76; 0.95; 1.14; 1.33; 1.52; 1.9 mg/l	0.19 - 1.9 mg/l	29 22 60
	3/40ED	0.04; 0.08; 0.11; 0.15; 0.19; 0.28; 0.38; 0.48; 0.57 mg/l	0.04 - 0.57 mg/l	29 79 70
	3/40FD	0.38; 0.48; 0.57; 0.66; 0.76; 0.95; 1.14; 1.33; 1.52 mg/l	0.38 - 1.52 mg/l	29 87 50
	3/157	0.25; 0.5; 0.75; 1; 1.25; 1.5; 2; 3; 5 mg/l	0.25 - 5.0 mg/l	23 05 70
Chromium	3/59	10; 20; 30; 40; 50; 60; 70; 80; 100 µg	10 - 100 µg	23 59 00
Copper	3/106	0; 0.1; 0.2; 0.3; 0.4; 0.5; 0.6; 0.8; 1 mg/l	0 - 1.0 mg/l	23 00 50
	3/110	0; 0.5; 1; 1.5; 2; 2.5; 3; 3.5; 4 mg/l	0 - 4.0 mg/l	23 00 40
DEHA	3/150	8; 16; 24; 32; 40; 48; 56; 64; 80 µg/l Disc reading should be multiplied by 2 for true DEHA concentration	16 - 160 µg	23 04 60

Reagents	Quantity	Code	Accessories	Code
CHLORINE HR (KI)	100	51 30 00	40 mm cell W680/40	60 68 90
	250	51 30 01		
ACIDIFYING GP	100	51 54 80		
	250	51 54 81		
Combi pack#	each 100	51 77 21		
CHLORINE HR (KI)/ ACIDIFYING GP	each 250	51 77 22		
CHLORINE HR (KI) ACIDIFYING GP			13.5 mm cell 10ml	35 42 43
CHLORINE HR (KI) ACIDIFYING GP			13.5 mm cell 10ml	35 42 43
DPD No.1 NESSLERISER	100	51 12 30	Nessleriser 2150	17 21 50
	250	51 12 31	Nessler tubes 113 mm	35 30 60
DPD No.2 NESSLERISER	100	51 12 40		
	250	51 12 41		
DPD No.3 NESSLERISER	100	51 12 50		
	250	51 12 51		
DPD No.4 NESSLERISER	100	51 12 60		
	250	51 12 61		
DPD No. 1/2/3/4 NESSLERISER			Nessleriser 2150	17 21 50
			Nessler tubes 113 mm	35 30 60
DPD No. 1/2/3/4 NESSLERISER			Nessleriser 2150	17 21 50
			Nessler tubes 113 mm	35 30 60
DPD No. 1/2/3/4 NESSLERISER			Nessleriser 2150	17 21 50
			Nessler tubes 113 mm	35 30 60
DPD No. 1	100	51 10 60 BT	13.5 mm cell, 10 ml	35 42 43
	250	51 10 61 BT		
DPD No. 1			40 mm cell W680/40	60 68 90
DPD No. 1			40 mm cell W680/40	60 68 90
CHLORINE HR (KI)	100	51 30 00	40 mm cell W680/40	60 68 90
	250	51 30 01		
ACIDIFYING GP	100	51 54 80		
	250	51 54 81		
Combi pack#	each 100	51 77 21		
CHLORINE HR (KI)/ ACIDIFYING GP	each 250	51 77 22		
Details on request			13.5 mm cell, 10 ml	35 42 43
COPPER/ZINC LR	100	51 26 20	13.5 mm cell, 10 ml	35 42 43
	250	51 26 21		
COPPER/ZINC HR	100	51 23 40	13.5 mm cell, 10 ml	35 42 43
	250	51 23 41		
DEHA	100	51 32 20	40 mm cell W680/40	60 68 90
	250	51 32 21		
DEHA solution	100 ml	46 11 81		



Test disc

Material Safety Data Sheets: www.tintometer.com, # no BT blister tablets, including stirring rod, 10 cm

Comparator 2000+

Tests, Discs, Reagents, Cells

Test	Disc	Disc Readings	Range	Code
Fluoride	NOM	0; 0.2; 0.4; 0.6; 0.8; 1; 1.2; 1.4; 1.6 mg/l	0 - 1.6 mg/l	28 37 30
Hardness total	4/38	0; 5; 10; 15; 20; 25; 30; 40; 60 mg/l	0 - 60 mg/l CaCO ₃	23 10 70
Hazen/APHA	4/28	50; 75; 100; 150; 200; 250; 300; 400; 500 mg Pt/l	50 - 500 mg/l Pt	24 28 01
	NSH	10; 20; 30; 40; 50; 60; 70; 80; 90 mg Pt/l	10 - 90 mg/l Pt	28 41 70
	NSB	70; 85; 100; 125; 150; 175; 200; 225; 250 mg Pt/l	70 - 250 mg/l Pt	28 41 20
	CAA	0; 2.5; 5; 7.5; 10; 15; 20; 25; 30 mg Pt/l	0 - 30 mg/l Pt	28 41 50
	CAB	30; 35; 40; 45; 50; 55; 60; 65; 70 mg Pt/l	30 - 70 mg/l Pt	28 41 60
Hydrazine	3/126	0; 0.05; 0.1; 0.15; 0.2; 0.25; 0.3; 0.4; 0.5 mg/l	0 - 0.5 mg/l	23 01 90
	3/135	0.02; 0.04; 0.06; 0.08; 0.1; 0.12; 0.14; 0.16; 0.2 mg/l	0.02 - 0.2 mg/l	23 02 90
	3/85	0; 0.1; 0.2; 0.3; 0.4; 0.5; 0.6; 0.8; 1 mg/l	0 - 1.0 mg/l	23 85 00
	NOH	0; 0.5; 1; 2; 3; 4; 6; 8; 10 µg	0 - 10 µg/l	28 37 00
Hydrogen peroxide	3/50 A	0.05; 0.1; 0.15; 0.2; 0.25; 0.3; 0.35; 0.4; 0.5 mg/l	0.05 - 0.5 mg/l	23 50 00
	3/50 B	0.1; 0.2; 0.3; 0.4; 0.6; 1; 1.5; 2; 3 mg/l	0.1 - 3 mg/l	23 50 10
	3/50 E	0.01; 0.02; 0.03; 0.04; 0.05; 0.07; 0.09; 0.12; 0.15 mg/l	0.01 - 0.15 mg/l	23 50 20
Iodine	3/77A	0.4; 0.7; 1.1; 1.4; 1.8; 2.2; 2.5; 2.9; 3.6 mg/l	0.4 - 3.6 mg/l	23 77 10
	3/77B	0.7; 1.4; 2.2; 3.6; 5.4; 7.2; 9.0; 11; 14 mg/l	0.7 - 14 mg/l	23 77 20
Iron total	3/144	0.02; 0.04; 0.06; 0.08; 0.1; 0.15; 0.2; 0.25; 0.3 mg/l	0.02 - 0.3 mg/l	23 03 80
	3/116	0.1; 0.2; 0.3; 0.4; 0.5; 0.6; 0.7; 0.8; 1 mg/l	0.1 - 1.0 mg/l	23 01 00
	3/117	1; 2; 3; 4; 5; 6; 7; 8; 10 mg/l	1.0 - 10 mg/l	23 01 10
	NOL	0.01; 0.02; 0.03; 0.04; 0.05; 0.06; 0.07; 0.08; 0.10 mg/l	0.01 - 0.1 mg/l	28 37 20
Manganese	3/169	0; 0.5; 1; 1.5; 2; 2.5; 3; 3.5; 4 mg/l	0 - 4 mg/l	23 06 90

Reagents	Quantity	Code	Accessories	Code
FLUORIDE A-Z	100	51 14 00	Nessleriser 2150	17 21 50
	250	51 14 01	Nessler tubes 113 mm	35 30 60
FLUORIDE EXCESS AL	100	51 14 10		
	250	51 14 11		
ERIOCHROME HARDNESS powder	100 Tests	46 29 50	13.5 mm cell, 10 ml	35 42 43
Straight colour match to sample			40 mm cell W680/40	60 68 90
Straight colour match to sample			Nessleriser 2150	17 21 50
			Nessler tubes 113 mm	35 30 60
Straight colour match to sample			Nessleriser 2150	17 21 50
			Nessler tubes 113 mm	35 30 60
Straight colour match to sample			Nessleriser 2250	17 22 50
			Nessler tubes 250 mm	35 42 00
Straight colour match to sample			Nessleriser 2250	17 22 50
			Nessler tubes 250 mm	35 42 00
HYDRAZINE TEST powder	30 g	46 29 10	13.5 mm cell 10 ml	35 42 43
HYDRAZINE TEST powder	30 g	46 29 10	40 mm cell W680/40	60 68 90
p-DMAB reagent	100 ml	46 12 61	13.5 mm cell, 10 ml	35 42 43
p-DMAB reagent	100 ml	46 12 61	Nessler tubes 113 mm	35 30 60
HYDR. PEROXIDE LR	100	51 23 80	13.5 mm cell 10 ml	35 42 43
	250	51 23 81		
HYDR. PEROXIDE LR			13.5 mm cell 10 ml	35 42 43
HYDR. PEROXIDE LR			40 mm Küvette W680/40	60 68 90
DPD No. 1	100	51 10 60 BT	13.5 mm cell, 10 ml	35 42 43
	250	51 10 61 BT		
DPD No. 1			13.5 mm cell, 10 ml	35 42 43
IRON LR	100	51 53 70	40 mm cell W680/40	60 68 90
	250	51 53 71		
IRON LR	100	51 53 70	13.5 mm cell, 10 ml	35 42 43
	250	51 53 71		
IRON (II) LR	100	51 54 20		
IRON HR	100	51 53 80	13.5 mm cell, 10 ml	35 42 43
	250	51 53 81		
IRON LR + IRON (II) LR			Nessleriser 2150	17 21 50
			Nessler tubes 113 mm	35 30 60
MANGANESE LR 1	100	51 60 80	13.5 mm cell, 10 ml	35 42 43
	250	51 60 81		
MANGANESE LR 2	100	51 60 90		
	250	51 60 91		
Combi pack#	each 100	51 76 21		
MANGANESE LR 1/ MANGANESE LR 2	each 250	51 76 22		



Nessleriser 2250 with lighting unit

Material Safety Data Sheets: www.tintometer.com, # no BT blister tablets, including stirring rod, 10 cm

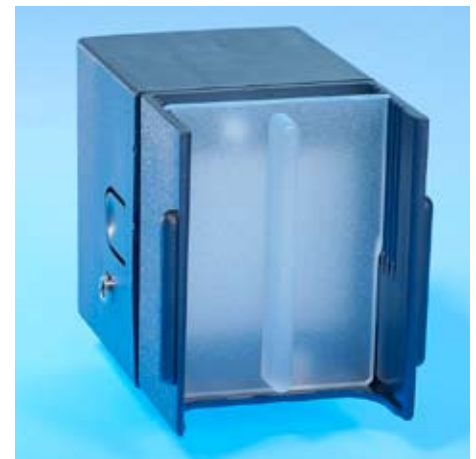
Comparator 2000+

Tests, Discs, Reagents, Cells

Test	Disc	Disc Readings	Range	Code
Molybdate	3/162	0; 1; 2; 3; 4; 5; 6; 8; 10 mg/l	0 -10 mg/l MoO ₄	23 06 20
	3/137	5; 10; 15; 20; 25; 30; 35; 40; 50 mg/l	5.0 -50 mg/l MoO ₄	23 03 20
	3/138	10; 20; 30; 40; 60; 80; 100; 120; 150 mg/l	10 -150 mg/l MoO ₄	23 03 30
Nitrate	3/124	0.1; 0.2; 0.3; 0.4; 0.5; 0.6; 0.7; 0.8; 1 mg/l	0.1 -1.0 mg/l NO ₃	23 01 70
	3/142	10; 20; 30; 40; 50; 60; 70; 80; 100 mg/l	10 -100 mg/l NO ₃	23 03 60
Nitrite	3/103	0.05; 0.1; 0.15; 0.2; 0.25; 0.3; 0.35; 0.4; 0.5 mg/l	0.05 - 0.5 mg/l N	23 00 30
	NJP	0.002; 0.004; 0.006; 0.01; 0.015; 0.02; 0.03; 0.04; 0.05 mg/l	0.002 - 0.05 mg/l N	28 39 60
	NJ	0.05; 0.1; 0.2; 0.3; 0.4; 0.5; 0.6; 0.8; 1 µg/l	0.05 - 1.0 µg/l N	28 35 80
Oxygen	3/165	2; 3; 4; 5; 6; 7; 8; 10; 12 mg/l	2.0 - 12 mg/l	23 06 50
	NOE	0; 0.005; 0.01; 0.015; 0.03; 0.055; 0.08; 0.1; 0.12 mg/l	0 - 0.12 mg/l	28 36 80
Ozone	3/67	0.1; 0.2; 0.3; 0.4; 0.5; 0.6; 0.7; 0.8; 1 mg/l	0.1 - 1.0 mg/l	23 67 00
	3/67A	0.01; 0.02; 0.03; 0.04; 0.05; 0.06; 0.07; 0.08; 0.1 mg/l	0.01 - 0.1 mg/l	23 67 10
	3/67S	0.05; 0.1; 0.15; 0.2; 0.25; 0.3; 0.35; 0.4; 0.45 mg/l	0.05 - 0.45 mg/l	23 67 70
	3/148	0; 0.05; 0.1; 0.15; 0.2; 0.25; 0.3; 0.4; 0.5 mg/l	0 - 0.5 mg/l	23 04 40



Reagents	Quantity	Code	Accessories	Code
Details on request			40 mm cell W680/40	60 68 90
MOLYBDATE No.1	100	51 30 60	40 mm cell W680/40	60 68 90
	250	51 30 61		
MOLYBDATE No.2	100	51 30 70		
	250	51 30 71		
Combi pack [#]	each 100	51 76 31		
MOLYBDATE No.1 HR/ MOLYBDATE No.2 HR	each 250	51 76 32		
MOLYBDATE No.1	100	51 30 60	13.5 mm cell, 10 ml	35 42 43
	250	51 30 61		
MOLYBDATE No.2	100	51 30 70		
	250	51 30 71		
NITRATE-TEST tablets	100 (bottle)	50 28 10	13.5 mm cell, 10 ml	35 42 43
NITRATE Test Powder	15 g	46 52 30	Nitrate-Test tubes	36 62 20
NITRITE LR	100	51 23 10		
	250	51 23 11		
NITRATE No.1	100	51 31 10	13.5 mm cell, 10 ml	35 42 43
	250	51 31 11		
NITRATE No.2	100	51 31 20		
	250	51 31 21		
Combi pack [#]	each 100	51 76 41		
Nitrate No.1 / No.2	each 250	51 76 42		
NITRITE LR	100	51 23 10	13.5 mm cell, 10 ml	35 42 43
	250	51 23 11		
NITRITE LR	100	51 23 10	Nessler tubes 113 mm	35 30 60
	250	51 23 11		
NITRITE ACIDIFYING	250 (bottle)	50 23 71		
Details on request			Nessler tubes 113 mm	35 30 60
DO reagent No.1	100 Tests	46 11 50	13.5 mm cell, 10 ml	35 42 43
DO reagent No.2	100 Tests	46 11 60		
DO reagent No.3	90 Tests	46 11 70		
INDIGO CARMINE	50 (bottle)	50 15 10	Nessleriser 2150 special tubes AF315	17 21 50 35 31 50
DPD No.4	100	51 12 20 BT	13.5 mm cell, 10 ml	35 42 43
	250	51 12 21 BT		
DPD No.4	100	51 12 20 BT	40 mm cell W680/40	60 68 90
	250	51 12 21 BT		
DPD No.4	100	51 12 20 BT	13.5 mm cell, 10 ml	35 42 43
	250	51 12 21 BT		
OZONE-INDIGO	100	51 31 70	40 mm cell W680/40	60 68 90
	250	51 31 71		



Lighting unit TK 102

Material Safety Data Sheets: www.tintometer.com, [#] no BT blister tablets, including stirring rod, 10 cm

Comparator 2000+

Tests, Discs, Reagents, Cells

Test	Disc	Disc Readings	Range	Code
pH value	2/1A	1.2; 1.4; 1.6; 1.8; 2.0; 2.2; 2.4; 2.6; 2.8	1.2 - 2.8 pH	22 10 10
	2/1B	2.8; 3; 3.2; 3.4; 3.6; 3.8; 4; 4.2; 4.4	2.8 - 4.4 pH	22 10 30
	2/1C	3.6; 3.8; 4; 4.2; 4.4; 4.6; 4.8; 5; 5.2	3.6 - 5.2 pH	22 10 50
	2/1E	4.4; 4.6; 4.8; 5; 5.2; 5.4; 5.6; 5.8; 6	4.4 - 6.0 pH	22 10 80
	2/1G	5.2; 5.4; 5.6; 5.8; 6; 6.2; 6.4; 6.6; 6.8	5.2 - 6.8 pH	22 11 00
	2/1H	6; 6.2; 6.4; 6.6; 6.8; 7; 7.2; 7.4; 7.6	6.0 - 7.6 pH	22 11 10
	2/1J	6.8; 7; 7.2; 7.4; 7.6; 7.8; 8; 8.2; 8.4	6.8 - 8.4 pH	22 11 30
	2/1K	7.2; 7.4; 7.6; 7.8; 8; 8.2; 8.4; 8.6; 8.8	7.2 - 8.8 pH	22 11 40
	2/1L	8; 8.2; 8.4; 8.6; 8.8; 9; 9.2; 9.4; 9.6	8.0 - 9.6 pH	22 11 90
	2/1P	4; 5; 6; 7; 8; 9; 9.4; 10; 11	4.0 - 11 pH	22 12 20
	NLC	6; 6.2; 6.4; 6.6; 6.8; 7; 7.2; 7.4; 7.6	6.0 - 7.6 pH	28 10 30
	NLF	8; 8.2; 8.4; 8.6; 8.8; 9; 9.2; 9.4; 9.6	8.0 - 9.6 pH	28 10 60
	Phosphate	3/133	0; 0.25; 0.5; 1; 1.5; 2; 2.5; 3; 4 mg/l	0 - 4.0 mg/l PO ₄
3/136		0; 5; 10; 15; 20; 25; 30; 35; 40 mg/l	0 - 40 mg/l PO ₄	23 03 10
3/12		0; 10; 20; 30; 40; 50; 60; 70; 80 mg/l	0 - 80 mg/l PO ₄	23 12 00
3/70		0; 10; 20; 30; 40; 50; 60; 70; 80; 100 mg/l	0 - 100 mg/l PO ₄	23 70 00
3/60		10; 20; 30; 40; 50; 60; 70; 80; 100 mg/l	10 - 100 mg/l PO ₄	23 60 00
NMD		10; 20; 30; 40; 50; 60; 70; 80; 100 µg/l	10 - 100 µg/l PO ₄	28 39 50

Reagents	Quantity	Code	Accessories	Code
THYMOL BLUE	100	51 16 50	13.5 mm cell, 10 ml	35 42 43
	250	51 16 51		
BROMOPHENOL BLUE	100	51 16 20	13.5 mm cell, 10 ml	35 42 43
	250	51 16 21		
BROMOCRESOL GREEN	100	51 17 60	13.5 mm cell, 10 ml	35 42 43
	250	51 17 61		
METHYL RED	100 ml	45 16 31	13.5 mm cell, 10 ml	35 42 43
	250 ml	45 16 32		
BROMOCRESOL PURPLE	100	51 17 30	13.5 mm cell, 10 ml	35 42 43
	250	51 17 31		
BROMOTHYMOL BLUE	100	51 16 40	13.5 mm cell, 10 ml	35 42 43
	250	51 16 41		
PHENOL RED	100	51 17 50 BT	13.5 mm cell, 10 ml	35 42 43
	250	51 17 51 BT		
CRESOL RED	100	51 16 00	13.5 mm cell, 10 ml	35 42 43
	250	51 16 01		
THYMOL BLUE	100	51 16 50	13.5 mm cell, 10 ml	35 42 43
	250	51 16 51		
UNIVERSAL PH Indicator	25 ml	45 17 70	13.5 mm cell, 10 ml	35 42 43
	100 ml	45 17 71		
	250 ml	45 17 72		
	500 ml	45 17 73		
BROMOTHYMOL BLUE PH Indicator	25 ml	45 16 20	Nessler tubes 113 mm	35 30 60
	100 ml	45 16 21		
	250 ml	45 16 22		
	500 ml	45 16 23		
THYMOL BLUE PH Indicator	25 ml	45 16 50	Nessler tubes 113 mm	35 30 60
	100 ml	45 16 51		
	250 ml	45 16 52		
	500 ml	45 16 53		
PHOSPHATE No.1 LR	100	51 30 40	13.5 mm cell, 10 ml	35 42 43
	250	51 30 41		
PHOSPHATE No.2 LR	100	51 30 50	13.5 mm cell, 10 ml	35 42 43
	250	51 30 51		
Combi pack [#]	each 100	51 76 51		
PHOSPHATE No.1+2 LR	each 200	51 76 52		
PHOSPHATE HR	100	51 19 80	13.5 mm cell, 10 ml	35 42 43
	250	51 19 81		
Details on request			13.5 mm cell, 10 ml	35 42 43
PHOSPHATE HR	100	51 19 80	13.5 mm cell, 10 ml	35 42 43
	250	51 19 81		
Vanadomolybdate reagent	1 litre	46 84 04	13.5 mm cell, 10 ml	35 42 43
Details on request			Nessler tubes 113 mm	35 30 60



Tablet reagents in foil blister strip (BT)

Material Safety Data Sheets: www.tintometer.com, [#] no BT blister tablets, including stirring rod, 10 cm

Comparator 2000+

Tests, Discs, Reagents, Cells

Test	Disc	Disc Readings	Range	Code
QAC (Quaternary Ammonia Compounds)	3/118	0; 2; 4; 6; 8; 10; 12; 15; 20 mg/l	0 - 20 mg/l	23 01 20
	3/119	0; 20; 40; 60; 80; 100; 120; 150; 200 mg/l	0 - 200 mg/l	23 01 30
Silica	3/139	0.4; 0.6; 1; 1.5; 2; 2.5; 3; 3.5; 4 mg/l	0.4 - 4.0 mg/l SiO ₂	23 03 40
	3/147	1; 2; 3; 4; 5; 6; 7; 8; 10 mg/l	1.0 - 10 mg/l SiO ₂	23 04 20
	3/140	0.1; 0.2; 0.3; 0.4; 0.5; 0.6; 0.7; 0.8; 1.0 mg/l	0.1 - 1.0 mg/l SiO ₂	23 02 50
	3/13	2.5; 5; 7.5; 10; 12.5; 15; 17.5; 20; 25 mg/l	2.5 - 25 mg/l SiO ₂	23 13 00
	NN	1; 2; 4; 6; 8; 10; 12; 16; 20 mg/l	1.0 - 20 mg/l SiO ₂	28 36 30
	NV	0.2; 0.3; 0.4; 0.5; 0.6; 0.7; 0.8; 0.9; 1.0 mg/l	0.2 - 1.0 mg/l SiO ₂	28 38 80
Sodium hypochlorite	3/2 Hypo	2; 4; 6; 8; 10; 12; 14; 16 %	2 - 16 %	23 21 10
Sugar	3/29A	0; 5; 10; 15; 30; 45; 60; 75; 100 mg/l	0 - 100 mg/l	23 29 10
Sulphide	3/128	0; 0.05; 0.1; 0.15; 0.2; 0.25; 0.3; 0.4; 0.5 mg/l	0 - 0.5 mg/l S	23 02 10
Zinc	3/151	0; 0.1; 0.2; 0.3; 0.4; 0.5; 0.6; 0.8; 1 mg/l	0 - 1.0 mg/l	23 04 70
	3/102	0; 0.5; 1; 1.5; 2; 2.5; 3; 3.5; 4 mg/l	0 - 4.0 mg/l	23 00 20



Certification for Comparator 2000+ Discs

To allow users to demonstrate that test equipment has been assessed for conformance with accepted quality standards, Lovibond® colour discs can be certified by Tintometer Group to conform to ISO 9001. If requested at the time of order, new discs are issued with a serial number and a certificate of conformance stating that the disc has satisfied the relevant inspection criteria and conforms to the requirements of the appropriate test. Depending on the requirements of the user's quality control system, used discs can be returned at regular intervals to Tintometer Group for checking and recertification.

Code	Type of certificate
999800	Certificate for a new test disc
999810	Certificate for a used test disc
999820	Calibration certificate for a new test disc
999830	Calibration certificate for a used test disc

Reagents	Quantity	Code	Accessories	Code
QAC LR	100 250	51 53 90 51 53 91	40 mm cell W680/40	60 68 90
QAC HR	100 250	51 54 00 51 54 01	13,5 mm Küvette, 10 ml	35 42 43
SILICA No.1	100 250	51 31 30 51 31 31	13.5 mm cell, 10 ml	35 42 43
SILICA No.2	100 250	51 31 40 51 31 41		
Combi pack#	each 100	51 76 71		
SILICA No.1 / No.2	each 200	51 76 72		
SILICA No.1/No.2			13.5 mm cell, 10 ml	35 42 43
Details on request			40 mm cell W680/40	60 68 90
Ammonia molybdate	100 ml	46 02 41	40 mm cell W680/40	60 68 90
Ammonia molybdate	100 ml	46 02 41	Nessleriser 2150	17 21 50
			Nessler tubes 113 mm	35 30 60
Details on request			Nessler tubes 113 mm	35 30 60
CHLORINE HR (KI)	100 250	51 30 00 51 30 01	13.5 mm cell, 10 ml	35 42 43
ACIDIFYING GP	100 250	51 54 80 51 54 81		
Combi pack#	each 100	51 77 21		
CHLORINE HR (KI)	each 250	51 77 22		
ACIDIFYING GP				
Details on request			5 mm cell W680/5	60 67 90
SULPHIDE No.1	100 (bottle)	50 29 30	13.5 mm cell, 10 ml	35 42 43
SULPHIDE No.2	100 (bottle)	50 29 40		
COPPER/ZINC LR	100	51 26 20	13.5 mm cell, 10 ml	35 42 43
COPPER/ZINC LR	250	51 26 21		
COPPER/ZINC HR	100	51 23 40	13.5 mm cell, 10 ml	35 42 43
COPPER/ZINC HR	250	51 23 41		



Tablet reagents in foil blister strip (BT)

Material Safety Data Sheets: www.tintometer.com, # no BT blister tablets, including stirring rod, 10 cm